



System trolley CLINO CR4

Maximum flexibility due to versatile mounting options

With the system trolley CR4 the cleaning methods EasyMop, MopFloat and FlatPress Ringo GMP can be combined, depending if pre-preparation or direct impregnation of flat mop is needed. The ClinoLink fitting system allows an easy individualization or modification according to requirement.

- Cleanroom fit stainless steel, completely autoclavable
- Maximum flexibility: Individual modification (modul assembly system)
- Fitting system for individual attachment of supplies
- Dimensions: L61 x W63 x H102 cm (Width is varying by mounting version)

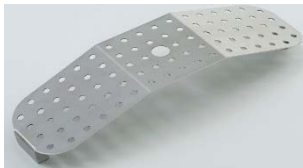


Main components



MopDrop

Enables the contactless opening of the mop frame. It is located directly above the release sack.



MopJump

System for contactless taking of mops.



MopFloat

Guaranteed identical impregnation independent of operator. The dosage can be varied between 130 ml, 250 ml or 400 ml depending on the use (floor, wall or ceiling cleaning) or mop type.



Flat wringer Ringo GMP

Dosage of the required amount of moisture.



EasyMop GMP

Mop impregnation in a closed system for the same level of treatment – independent of the operator.



**Mounting versions usable from ISO class 5 resp. in
GMP areas A/B**

Version 1 – Flat wringer

System trolley CLINO CR4 FP-GMP

- Holder for disposal bag with MopDrop
- 1 stainless steel container 9L (support for disposal bag)
- Flat wringer Ringo GMP
- 1 stainless steel container 25L
- 1 MopTen with MopJump, incl. stem
- 2 stainless steel containers 4L
- 1 handle holder
- 1 support for mop holder

Art.-no.: RRMOPCR4FP-GMP



Version 2 – MopFloat system

System trolley CLINO CR4 MF-GMP

- Holder for disposal bag with MopDrop
- 1 stainless steel container 9L (support for disposal bag)
- Stainless steel container 25L with MopFloat GMP, incl. 400 ml dosage insert
- 1 MopTen with MopJump, incl. stem
- 2 stainless steel containers 4L
- 1 handle holder
- 1 support for mop holder

Art.-no.: RRMOPCR4MF-GMP



Version 3 – EasyMop pre-preparation

System trolley CLINO CR4 EM-GMP

- Holder for disposal bag with MopDrop
- 1 stainless steel container 9L (support for disposal bag)
- 2 system boxes EasyMop GMP
- 2 stainless steel containers 4L
- 1 handle holder
- 1 support for mop holder

Art.-no.: RRMOPCR4EM-GMP



All trolleys are equipped with autoclavable swivel castors, 100mm.



Mounting versions usable from ISO class 7 - 8 resp. in GMP areas C/D

Version 1 – Flat wringer

System trolley CLINO CR4 FP-CR

- Holder for disposal bag with MopDrop
- 1 PP container 5L colourless (support for disposal bag)
- Flat wringer Ringo GMP
- 25L PP bucket
- 15L bucket with MopJump, incl. stem
- 2 Clino PlusBoxes incl. lid and sieve
- 1 handle holder
- 1 support for mop holder

Art.-no.: RRMOPCR4FP-CR



Version 2 – MopFloat system

System trolley CLINO CR4 MF-CR

- Holder for disposal bag with MopDrop
- 1 PP container 5L colourless (support for disposal bag)
- 25L PP container incl. MopFloat CR with dosage insert 400 ml
- 15L bucket with MopJump, incl. stem
- 2 Clino PlusBoxes incl. lid and sieve
- 1 handle holder
- 1 support for mop holder

Art.-no.: RRMOPCR4MF-CR



Version 3 – EasyMop pre-preparation

System trolley CLINO CR4 EM-CR

- Holder for disposal bag with MopDrop
- 1 PP container 5L colourless (support for disposal bag)
- 2 System boxes EasyMop CR (PP, various colours)
- 2 Clino PlusBoxes incl. lid and sieve
- 1 handle holder
- 1 support for mop holder

Art.-no.: RRMOPCR4EM-CR



All trolleys are equipped with electrically conductive castors, 100 mm.



Components for system trolley CR4

| | Art.-no.: | Description: |
|---|--------------|--|
|  | RRMOP3500830 | MopFloat dosage insert 130 ml |
| | RRMOP3500832 | MopFloat dosage insert 250 ml |
|  | RRMOPBEUT-M | Sterile disposal bag |
|  | RRMOP3500088 | Holder for 3 mop frames |
|  | RRMOP3500095 | Frame for Clino PlusBox, centrally |
|  | RRMOP3500094 | Frame for stainless steel container, 4L, centrally |
|  | RRMOP3500210 | MopJump for system box EasyMop GMP resp. MopTen, stainless steel 1.4404 (for 10 mop heads) |
|  | RRMOPBOXJUMP | System box EasyMop GMP, stainless steel 1.4404 incl. lid, seal and MopJump |



| | | |
|--|----------------|--|
| | RRMOPBOX-B | CLINO system box blue, incl. lid and seal |
| | RRMOPBOX-R | CLINO system box red, incl. lid and seal |
| | RRMOPBOX-G | CLINO system box yellow, incl. lid and seal |
| | RRMOPBOX-GR | CLINO system box green, incl. lid and seal |
| | RRMOPBOX-HG | CLINO system box grey, incl. lid and seal |
| | RRMOPBOX-A | CLINO system box anthracite, incl. lid and seal |
| | RRMOP3500100 | Autoclavable castors with double ball bearings, 100 mm |
| | RRMOP3500150 | Same as above, but with locking device |
| | RRMOP2013430 | Electrically conductive swivel castors with double ball bearings, 100 mm |
| | RRMOP2013440 | Same as above, but with locking device |
| | RRMOP3500019 | MopDrop for contactless disposal of mops |
| | RRMOPHA40E | Mop frame (40cm) and handle made of stainless steel, GMP-conform |
| | RRMOPHA40-T1.8 | Mop frame (40cm) made of stainless steel, aluminium telescopic handle 1-1,8m, autoclavable |
| | RRMOPHA40A | Mop frame (40cm) made of stainless steel, with handle made of anodized aluminium |

hans j. michael gmbh

Gewerbegebiet Hart 11, D-71554 Weissach i.T., Phone: 0049-7191-9105-0, Fax: 0049-7191-9105-19
 e-mail: office@hjm-reinraum.de, website: <http://www.cleanroom-hjm.com>